

Interim Pandemic Influenza Risk Management Guidance

AN OVERVIEW

Dr N Janakan
NPO, Communicable Diseases
WHO Sri Lanka

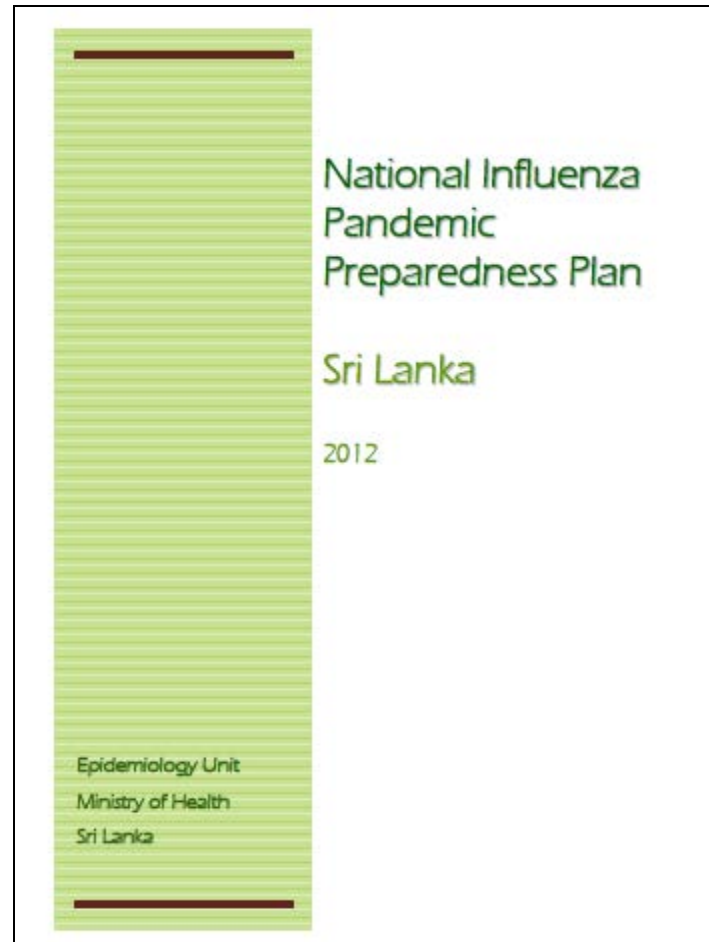
Influenza Pandemics

- **Unpredictable**
- **Serious consequences on human health & economic well-being globally**
- **Advanced planning & preparedness are critical to mitigate the impact of pandemic**
- **Declaration of PHEIC and/or pandemic stresses the need for collective global action & to follow certain regulations/ legal agreements by all countries**

Background

- **1st pandemic preparedness guidance was issued by WHO in 1999**
- **Since then 3 revisions have been made in 2005, 2009 & 2013 based on lessons learned & new evidence-based research**
- **2013 revision was based on lessons learned during A(H1N1) 2009 pandemic & suggestions from IHR Review Committee**
- **Guidance encourages MS to develop risk management plans taking into consideration the local context/ risk assessment**
- **Countries should consider reviewing / updating their national influenza preparedness & response plans taking into consideration the interim guidance 2013 (not intended to replace national plans)**

Influenza Pandemic Preparedness Plan



http://www.epid.gov.lk/web/attachments/article/180/NIPP_final.pdf

Interim Risk Management Guidance

- **Role of WHO**
 - **IHR (2005) implementation**
 - **Pandemic phases**
 - **Pandemic influenza preparedness (PIP) framework**
 - **Pandemic vaccine production**
- **Emergency Risk Management for Health**
- **National Pandemic Influenza Risk Assessment**
- **National Pandemic Influenza Risk Management**

IHR (2005) Implementation

- **Binding upon 196 state parties & provide a legal/ regulatory framework for timely & effective management of international public health risks (have potential to spread between countries)**
- **Serious events that endanger global public health are specified by IHR as public health emergencies of international concern (PHEIC)**
- **PHEIC - Serious, sudden, unusual or unexpected event that carries implications for public health beyond affected country's national borders**
- **Responsibility of determining PHEIC lies with DG/WHO after following certain procedures**

Decision instrument for assessment & notification of events that may constitute a public health emergency of international concern

4 diseases that always have to be notified: polio (wild type virus), smallpox, human influenza caused by a novel virus & SARS.

Diseases that always lead to the use of the algorithm: cholera, pneumonic plague, yellow fever, VHF (Ebola, Lassa, Marburg), WNF, meningitis etc.

Q1: Is the public health impact of the event serious?

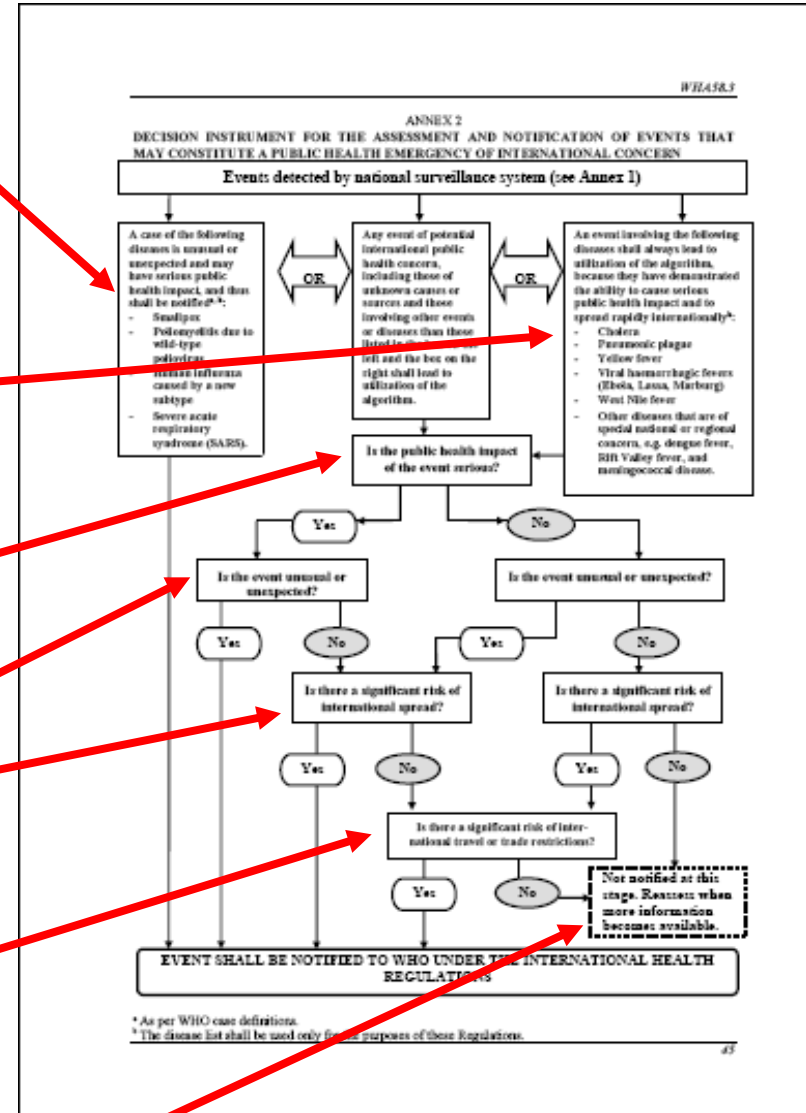
Q2: Is the event unusual or unexpected?

Q3: Is there a significant risk of international spread?

Q4: Is there significant risk to international travel or trade?

Positive response to 2 questions requires a country to notify WHO

Insufficient information: re-evaluate



DETERMINATION OF A PHEIC

- **DG/ WHO determines whether an event constitutes a PHEIC**
- **5 key criteria:**
 - **Information from the State / States**
 - **Decision instrument (Annex 2)**
 - **Advice of the Emergency Committee**
 - **Scientific principles, scientific information, other relevant information**
 - **Risk assessment: to human health, of international spread and interference with international traffic**

International Public Health Risks

- **IHR (2005) advises to avoid restrictions on international travel & trade by state parties unless absolutely necessary**
- **However, state parties may impose restrictions on their own after informing WHO with justification**
- **WHO will inform this decision to other state parties & they may request implementing state party to reconsider their decision**

Pandemic Phases

- **Guidance 2013 has simplified the phases & their definitions**
- **Reflects the WHO's risk assessment of global situation regarding an influenza virus with pandemic potential**
- **Based on evolving virological, epidemiological & clinical data**
- **Pandemic phases (based on global risk assessment)**
 - **Inter-pandemic (preparedness)**
 - **Alert (preparedness & response)**
 - **Pandemic (response)**
 - **Transition (recovery & preparedness)**
- **Countries are strongly advised to do their own risk assessment taking into consideration the global assessment provided by WHO**

Activities during pandemic phases

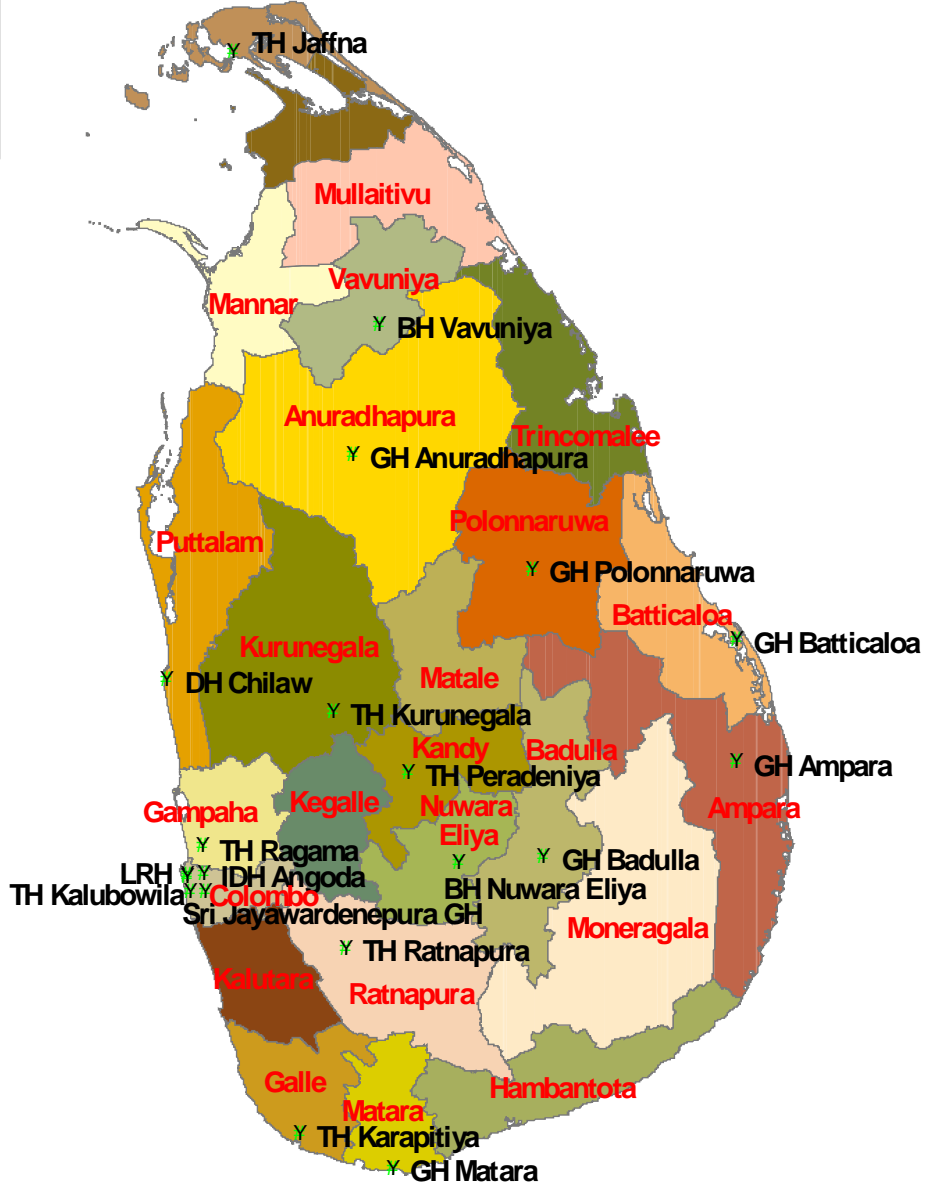
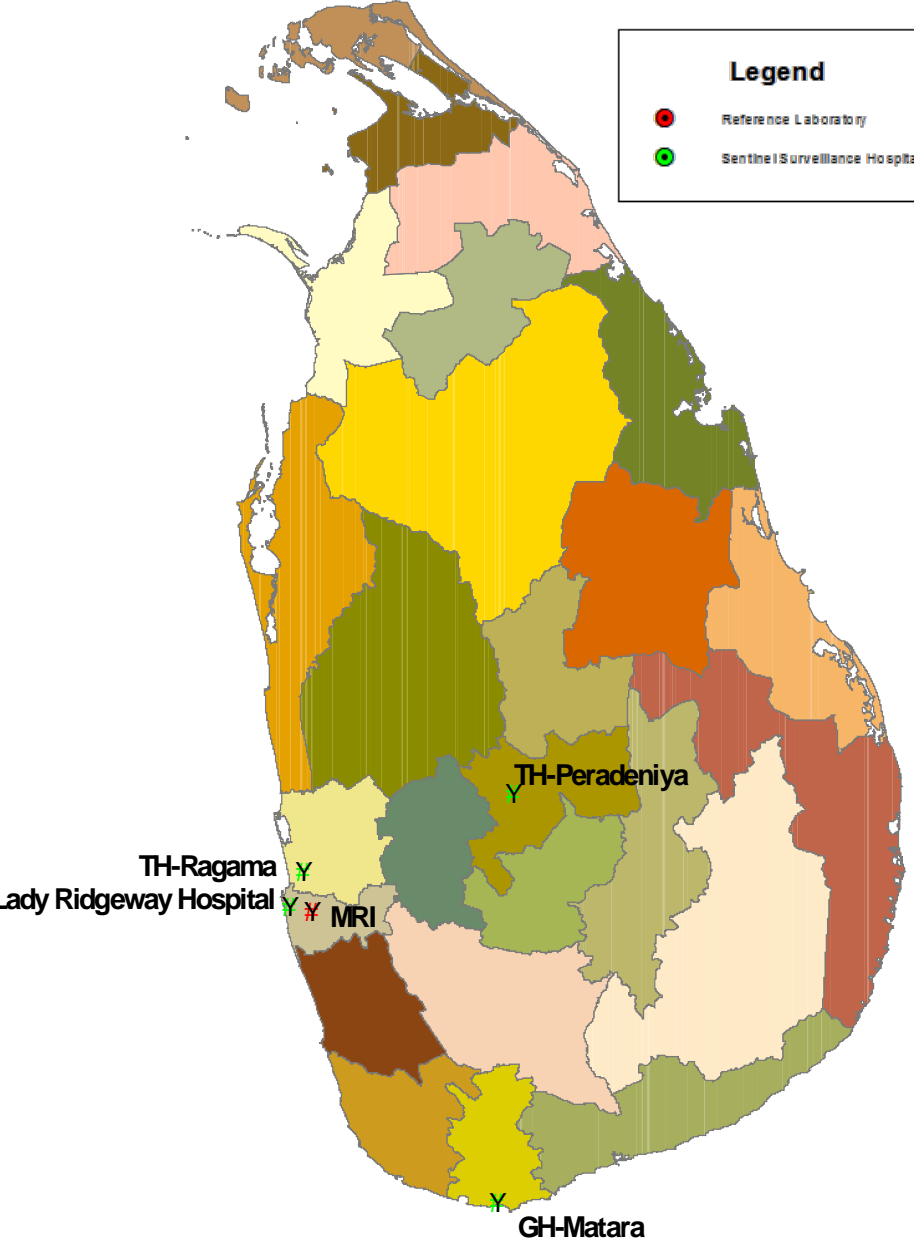
- **Inter-pandemic phase - Surveillance (SARI & ILI), emergency risk management capacity development**
- **Alert phase - Risk assessment, activate stakeholders/ advisory groups, deploy anti-virals, intensify preparedness**
- **Pandemic phase - Risk assessment & scale response**
- **Transition phase - Risk assessment & tail-off response**

SARI Sentinel Surveillance Hospitals and Reference Laboratory (4 Hospitals)

ILI Sentinel Surveillance Hospitals and Reference Laboratory (20 Hospitals)

Legend

- Reference Laboratory
- Sentinel Surveillance Hospital



Pandemic Influenza Preparedness (PIP) Framework

- **Aims to**
 - **improve sharing of influenza viruses with pandemic potential (for global monitoring & risk assessment, facilitate vaccine development)**
 - **Ensuring equitable access for vaccines & medicines among countries during outbreaks/ pandemics (benefit sharing)**

Pandemic vaccine production

- **WHO issues biannual recommendations on the composition of seasonal influenza vaccines**
- **Recommendations & availability of vaccine viruses announced publicly by WHO & also communicated to vaccine manufacturers**
- **During an emerging pandemic, selection of pandemic vaccine strain & distribution of vaccine viruses for pandemic vaccine production are critical functions of WHO**

Risk assessment & management

- **MS encouraged to use national risk assessments to take risk management decisions for the benefit of country's specific situation & needs**
- **Risk management involves**
 - **Policy & resource management**
 - **Planning & coordination**
 - **Information & knowledge management**
 - **Health infrastructure & logistics**
 - **Health & related services**
 - **Community capacities**