



International Civil Aviation Organization

ELECTRONIC BULLETIN

For information only

EB 2023/30

27 June 2023

2016-2021 WILDLIFE STRIKE ANALYSES (IBIS)

The analyses of wildlife strike reports for the years 2016 to 2021 are based on 273,343 reports, received from 136 States on strikes occurring in 194 States and territories, as shown in Attachment A. A summary of wildlife strikes reported to the International Civil Aviation Organization (ICAO) Bird Strike Information System (IBIS) for the years 2016 to 2021 is included in Attachment B, the IBIS World Wildlife Strike Statistics in Attachment C, and a list of wildlife species in Attachment D. The above attachments (available in English only) can be found at www.icao.int/IBIS.

The analyses of wildlife strike data and observing and monitoring of wildlife activities can reveal trends that will assist aerodrome operators in identifying areas of concern, which should be addressed through a well-managed wildlife control programme. Wildlife strike statistics can also be analysed to determine during which times of year or day wildlife control is most needed.

In order to better facilitate occurrence reporting and data analysis, ICAO has replaced the previous IBIS computer application with a reporting system based on the European Co-ordination Centre for Accident and Incident Reporting Systems (ECCAIRS) platform. A User Manual and Software Installation Manual can be downloaded at www.icao.int/IBIS. States are encouraged to submit wildlife strike reports either via ECCAIRS “e5f/e4f” files, or via an ECCAIRS Excel-based form that can also be downloaded at www.icao.int/IBIS.

Enclosure:

- A — List of States and Territories for the years 2016-2021
- B — Summary of Wildlife Strikes reported to ICAO Bird Strike Information System (IBIS) for the years 2016-2021
- C — IBIS World Wildlife Strike Statistics 2016-2021
- D — List of wildlife species for the years 2016-2021

Issued under the authority of the Secretary General

ATTACHMENT A to EB 2023/30

LIST OF STATES AND TERRITORIES FOR THE YEARS 2016-2021

States Reporting (136)

Albania	Estonia	Mexico
Algeria	Fiji	Moldova
Angola	Finland	Montenegro
Argentina	France	Morocco
Armenia	Georgia	Mozambique
Australia	Germany	Myanmar
Austria	Ghana	Nepal
Azerbaijan	Greece	Netherlands
Bahrain	Greenland	New Zealand
Bangladesh	Guatemala	Nicaragua
Barbados	Guinea	Nigeria
Belarus	Guinea-Bissau	North Macedonia
Belgium	Guyana	Norway
Benin	Honduras	Pakistan
Bolivia (Plurinational State of)	Hungary	Palau
Bosnia and Herzegovina	India	Panama
Brazil	Indonesia	Peru
Bulgaria	Iran, Islamic Republic of	Philippines
Burkina Faso	Iraq	Poland
Cabo Verde	Israel	Portugal
Cambodia	Italy	Puerto Rico
Cameroon	Jamaica	Qatar
Canada	Japan	Republic of Korea
Chile	Jordan	Romania
China	Kazakhstan	Russian Federation
Congo, Democratic Republic of the	Kenya	Rwanda
Cook Islands	Kosovo	Saint Lucia
Costa Rica	Kuwait	Sao Tome and Principe
Côte d'Ivoire	Kyrgyzstan	Saudi Arabia
Croatia	Latvia	Senegal
Cuba	Lebanon	Serbia
Cyprus	Libya	Seychelles
Czech Republic	Luxembourg	Singapore
Czechia	Madagascar	Slovakia
Denmark	Malaysia	Slovenia
Djibouti	Maldives	South Africa
Dominican Republic	Mali	South Sudan
Egypt	Malta	Spain
El Salvador	Mauritania	Sri Lanka
Equatorial Guinea	Mauritius	Sudan

Sweden
Switzerland
Tanzania, United Republic of
Thailand
Togo
Trinidad and Tobago
Tunisia
Türkiye
Ukraine
United Arab Emirates
United Kingdom
United States
Uzbekistan
Venezuela (Bolivarian Republic of)
Viet Nam

States/Territories of Occurrence (194)

Afghanistan	Croatia	Iraq
Albania	Cuba	Ireland
Algeria	Curaçao	Israel
American Samoa	Cyprus	Italy
Angola	Czechia	Jamaica
Antigua and Barbuda	Denmark	Japan
Argentina	Djibouti	Jordan
Armenia	Dominican Republic	Kazakhstan
Australia	East Timor	Kenya
Austria	Ecuador	Kiribati
Bahamas	Egypt	Kosovo
Bahrain	El Salvador	Kuwait
Bangladesh	Equatorial Guinea	Kyrgyzstan
Barbados	Estonia	Latvia
Belarus	Ethiopia	Lebanon
Belgium	Europe and North Atlantic	Libya
Belize	Fiji	Lithuania
Benin	Finland	Luxembourg
Bolivia	France	Macao, China
Bolivia (Plurinational State of)	French Polynesia	Madagascar
Bosnia and Herzegovina	Gabon	Malaysia
Brazil	Georgia	Maldives
British Overseas Territory of Bermuda	Germany	Mali
British Overseas Territory of Cayman Islands	Ghana	Malta
British Overseas Territory of Gibraltar	Greece	Marshall Islands
British Virgin Islands	Greenland	Martinique
Bulgaria	Grenada	Mauritania
Burkina Faso	Guadeloupe	Mauritius
Cabo Verde	Guam	Mayotte
Cambodia	Guatemala	Mexico
Cameroon	Guinea	Micronesia (Federated States of)
Canada	Guinea-Bissau	Moldova
Chad	Guyana	Montenegro
Chile	Haiti	Morocco
China	Honduras	Mozambique
Colombia	Hong Kong, China	Myanmar
Congo, Democratic Republic of the	Hungary	Namibia
Cook Islands	India	Nauru
Costa Rica	Indonesia	Nepal
Côte d'Ivoire	Iran, Islamic Republic of	Netherlands

New Caledonia	South Africa
New Zealand	South Sudan
Nicaragua	Spain
Niger	Sri Lanka
Nigeria	Sudan
North Macedonia	Suriname
Northern Mariana Islands	Sweden
Norway	Switzerland
Oman	Tanzania, United Republic of
Pakistan	Thailand
Palau	Togo
Panama	Tonga
Papua New Guinea	Trinidad and Tobago
Paraguay	Tunisia
Peru	Türkiye
Philippines	Turkmenistan
Poland	Uganda
Portugal	Ukraine
Puerto Rico	United Arab Emirates
Qatar	United Kingdom
Republic of Korea	United States
Romania	United States Minor Outlying Islands
Russian Federation	Uruguay
Rwanda	Uzbekistan
Saint Barthélemy	Vanuatu
Saint Kitts and Nevis	Venezuela (Bolivarian Republic of)
Saint Lucia	Viet Nam
Saint Martin	Virgin Islands
Saint Pierre and Miquelon	
Saint Vincent and the Grenadines	
Samoa	
Sao Tome and Principe	
Saudi Arabia	
Senegal	
Serbia	
Seychelles	
Singapore	
Slovakia	
Slovenia	
Solomon Islands	
Somalia	

SUMMARY OF WILDLIFE STRIKES REPORTED TO THE ICAO BIRD STRIKE INFORMATION SYSTEM (IBIS) FOR THE YEARS 2016-2021

1. INTRODUCTION

1.1 The ICAO Bird Strike Information System (IBIS) was created to collect and disseminate information on wildlife strikes to aircraft.

1.2 This statistical summary is intended to provide the reader with an overview of the global wildlife strike situation, as reported to ICAO for the years 2016 to 2021. It supplements the IBIS World Wildlife Strike Statistics in Attachment C to this Electronic Bulletin.

2. STATISTICAL ANALYSIS FOR THE YEARS 2016-2021

2.1 *Wildlife strike reports at Global Level:* The first data period (EB 2009/37) covered the years 2001 to 2007, seven years in total with 42 508 wildlife strike reports. The last data period (EB 2017/25) covered the years 2008 to 2015, eight years in total with 97 751 wildlife strike reports. This data period covers the years 2016 to 2021, six years in total with 273 343 wildlife strike reports. Although this data period is shorter compared to previous ones and affected by the COVID-19 pandemic, the number of wildlife strikes reported to ICAO has significantly increased by around 280 per cent compared to the last period.

2.2 For this data period covering the years 2016-2021, wildlife strikes were reported to ICAO by 136 States. These strikes occurred in 194 States and territories throughout the world. The progress of reporting of wildlife strikes to ICAO since 2001 is illustrated in Chart 1.

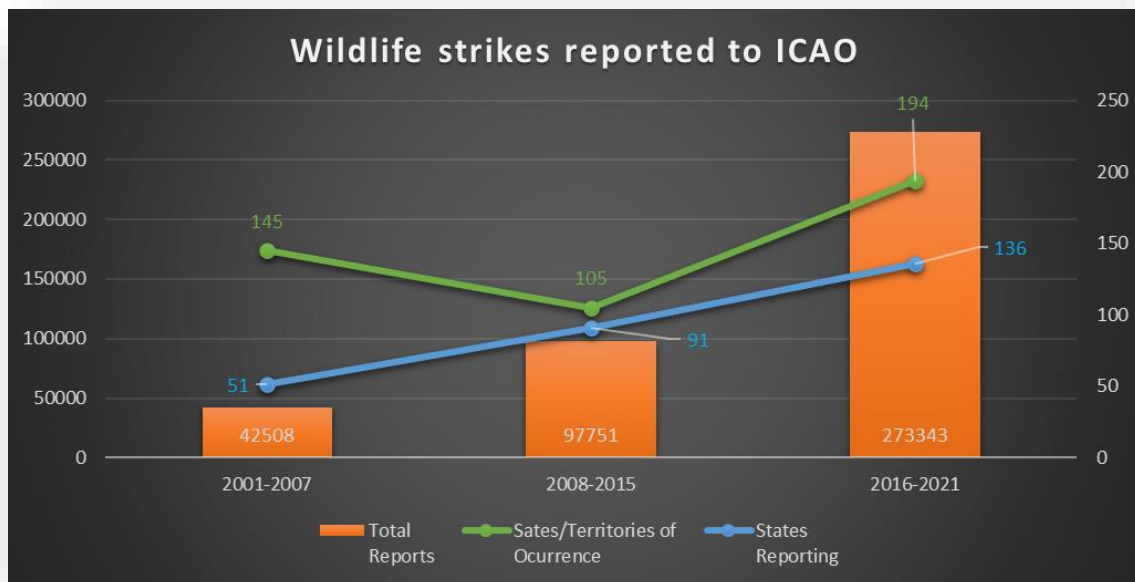


Chart 1. Wildlife strikes reported to ICAO

2.3 **Wildlife strike reports distributed by ICAO Region in which they occurred:** 33 per cent of the reported wildlife strikes occurred in the North American, Central American and Caribbean (NACC) region, and 26 per cent in the European and North Atlantic (EUR/NAT) region.

2.4 It is important to highlight the more balanced distribution of wildlife strike reports among ICAO regions for this data period covering 2016 to 2021. The first (2001 to 2007) and second (2008 to 2015) data periods demonstrated a strong concentration of around 96 per cent of the reports in the NACC and EUR/NAT regions. This data period is a more realistic account of the traffic movements vis-à-vis the number of wildlife strikes in each ICAO Region. This is a result of all the efforts made by both ICAO and States in collecting the data.

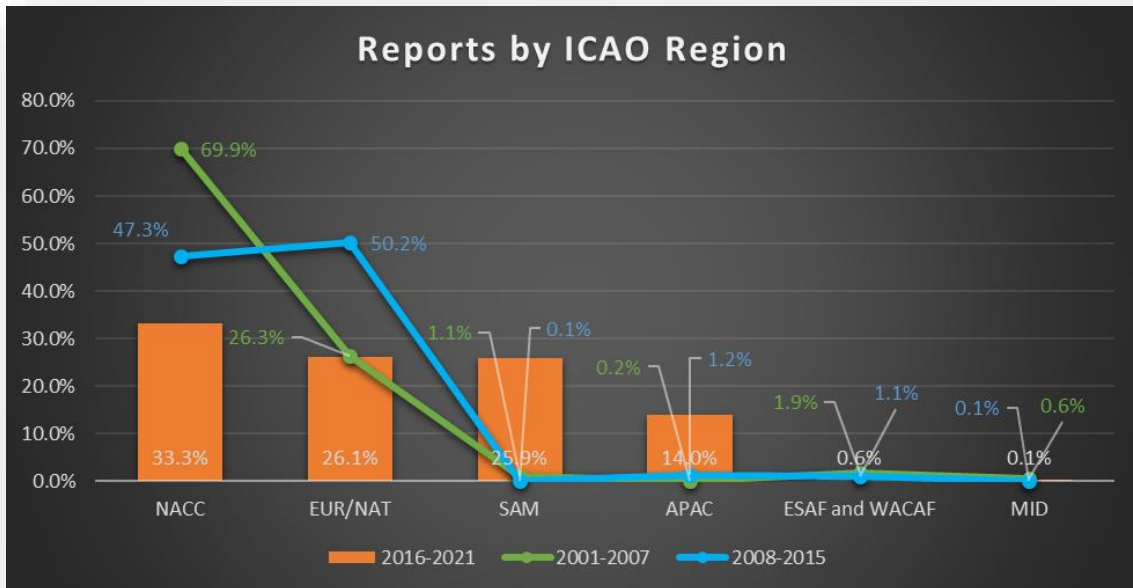


Chart 2. Wildlife strike reports distributed by ICAO Region in which they occurred

2.5 **Light conditions under which the wildlife strikes occurred:** 68 per cent of the wildlife strikes occurred during the daylight time and 19 per cent occurred at nighttime. Daylight time remained to be the highest activity of wildlife strikes and accounts for almost four times the amount of wildlife strikes during the night, which reveals a pattern of light conditions on wildlife strikes.

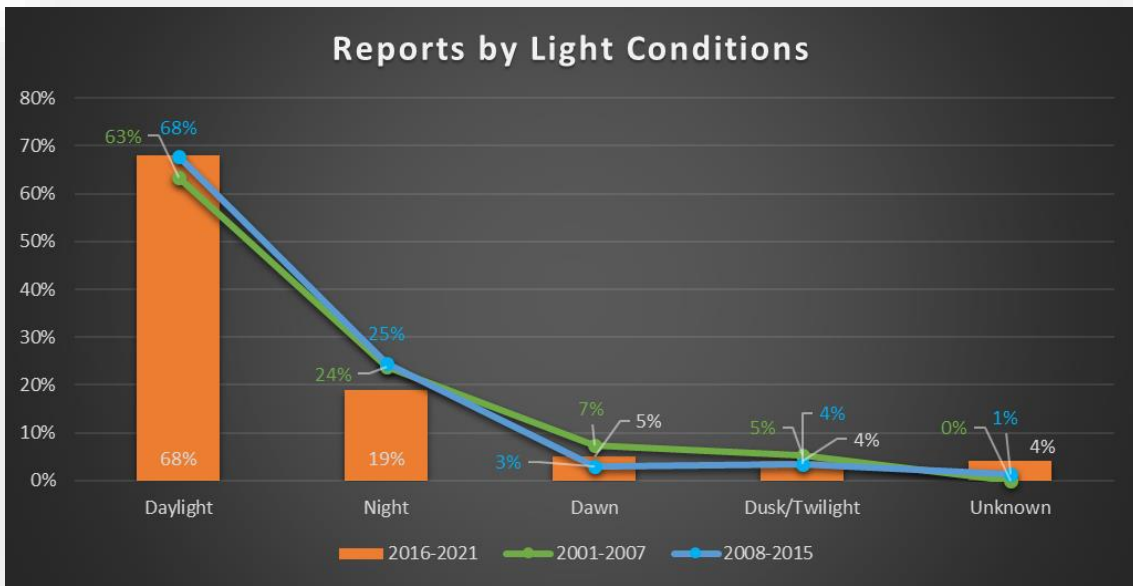


Chart 3. Wildlife strikes reported by light conditions

2.6 *When the wildlife strikes occurred during the year:* It was possible to identify two spikes of wildlife strikes during the year. The first one occurred between February and May. The second one occurred between June and August, from which the activity of wildlife strikes started to reduce until reaching the lowest rates in December, January and February.

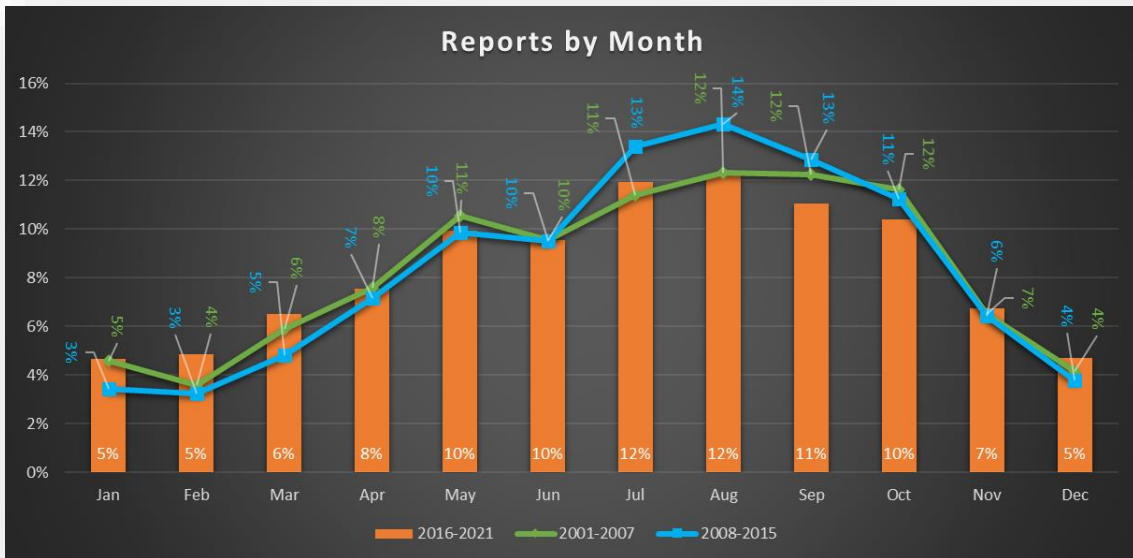


Chart 4. Wildlife strikes reported by month of occurrences

2.7 **Flight phases in which the wildlife strikes occurred:** 74 per cent of the wildlife strikes occurred on or near the aerodrome. 24 per cent of these occurred during the take-off phase while 46 per cent occurred during the approach and landing phase. Flight phase classified as “unknown” had covered 21 per cent.

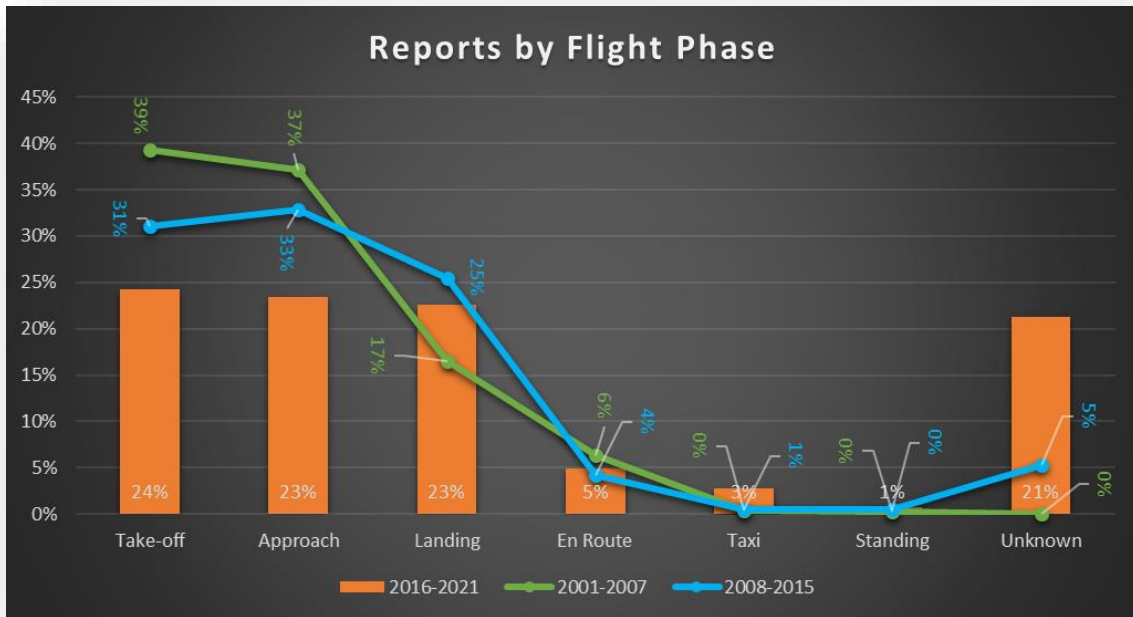


Chart 5. Wildlife Strikes reported according to flight phase

2.8 **Wildlife species most frequently struck:** Hawks, eagles and vultures were the most reported species, accounting for 28 per cent of all the reported strikes with information on species. Perching birds accounted for 27 per cent, and shore birds represented 18 per cent. The reported species with more than 1 per cent, excluding those classified as “unknown”, are illustrated in Chart 6.

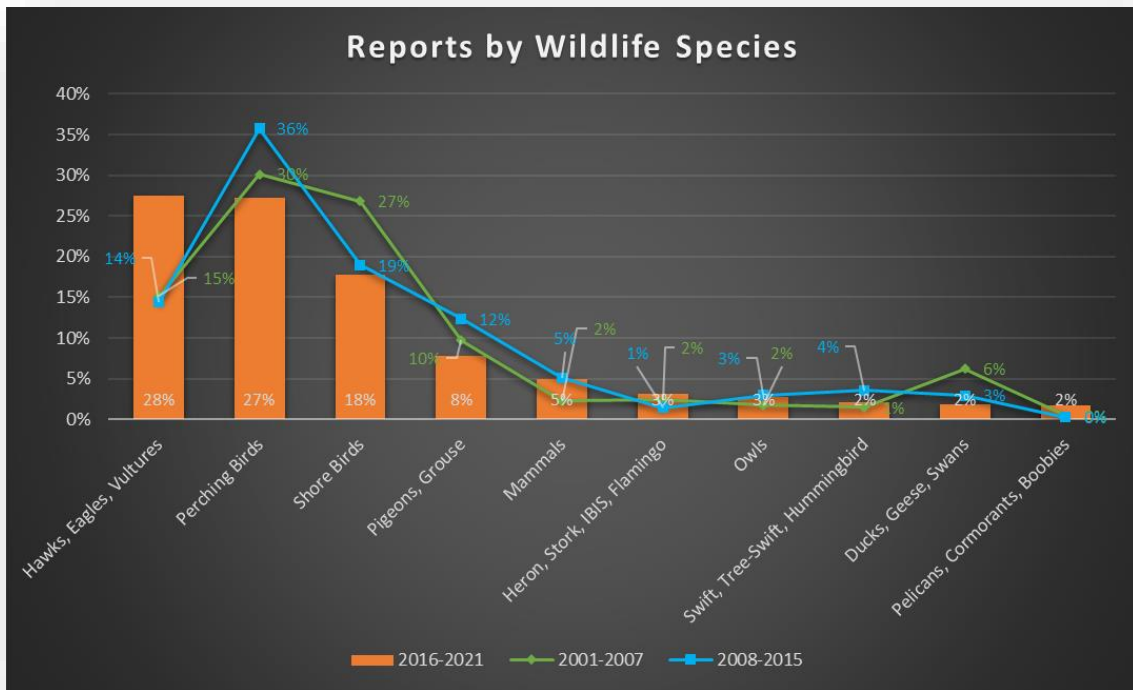


Chart 6. Comparison between wildlife species

2.9 It should be noted that there has been a significant reduction since 2008 in the number of wildlife species reported as “unknown”, which is illustrated in Chart 7.

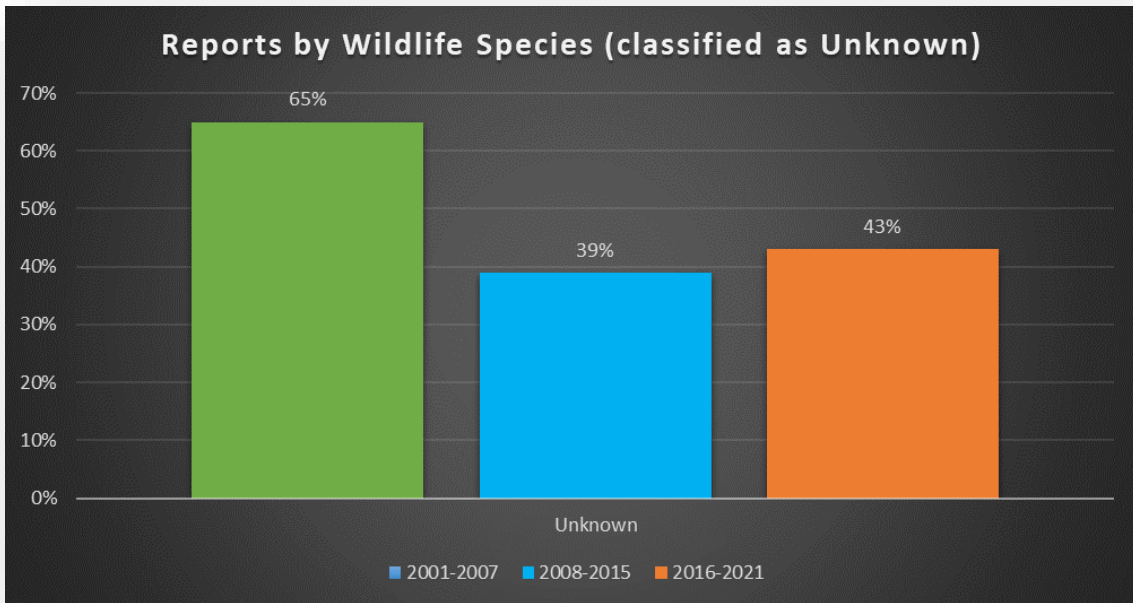


Chart 7. Wildlife species classified as “Unknown”

2.10 **Parts of Aircraft Struck and/or Damaged:** Parts of aircraft struck were reported in 21 per cent of the total reports. The parts struck most often, as reported, were the Engines with 17 per cent followed by the Radome, Windshield and Wing/Rotor with 14 percent each, and then by the Fuselage with 12 per cent.

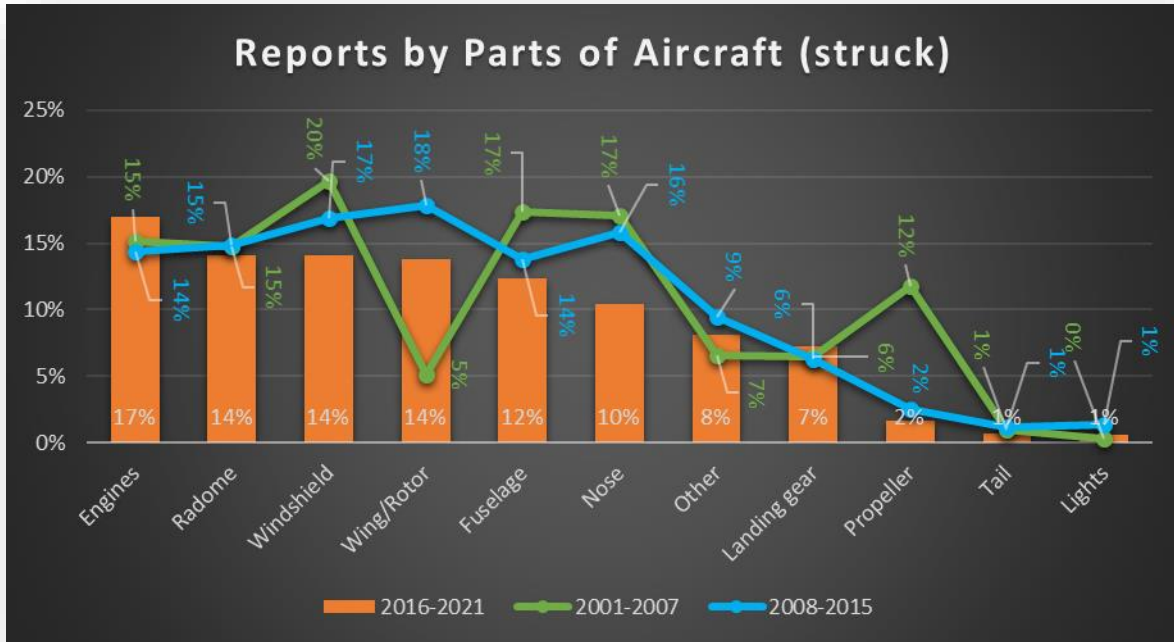


Chart 8. Wildlife strikes reported by parts of aircraft (struck)

2.11 Parts of aircraft damaged were reported in 3 per cent of the total reports. The parts damaged most, as reported, were the Engines with 34 per cent followed by the Wing/Rotor with 18 per cent and then by the Radome with 11 per cent.

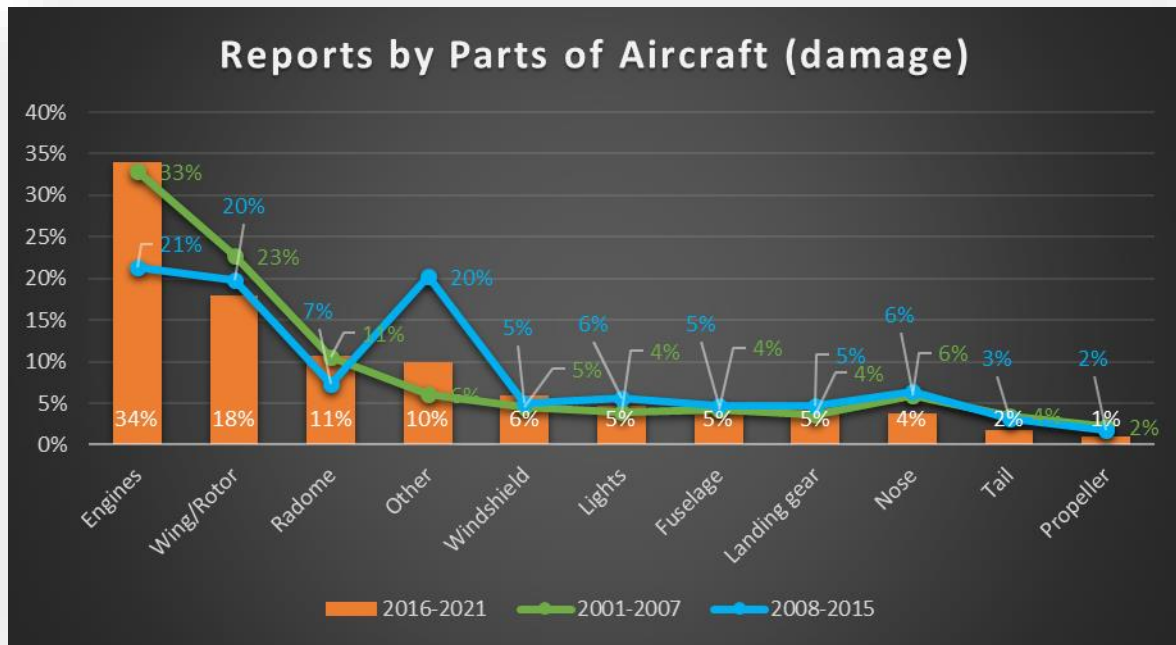


Chart 9. Wildlife strikes reported by parts of aircraft (damage)

2.12 The comparison between the parts struck and the parts damaged by wildlife strikes for the data period covering the years 2016 to 2021, is illustrated in Figure 1.

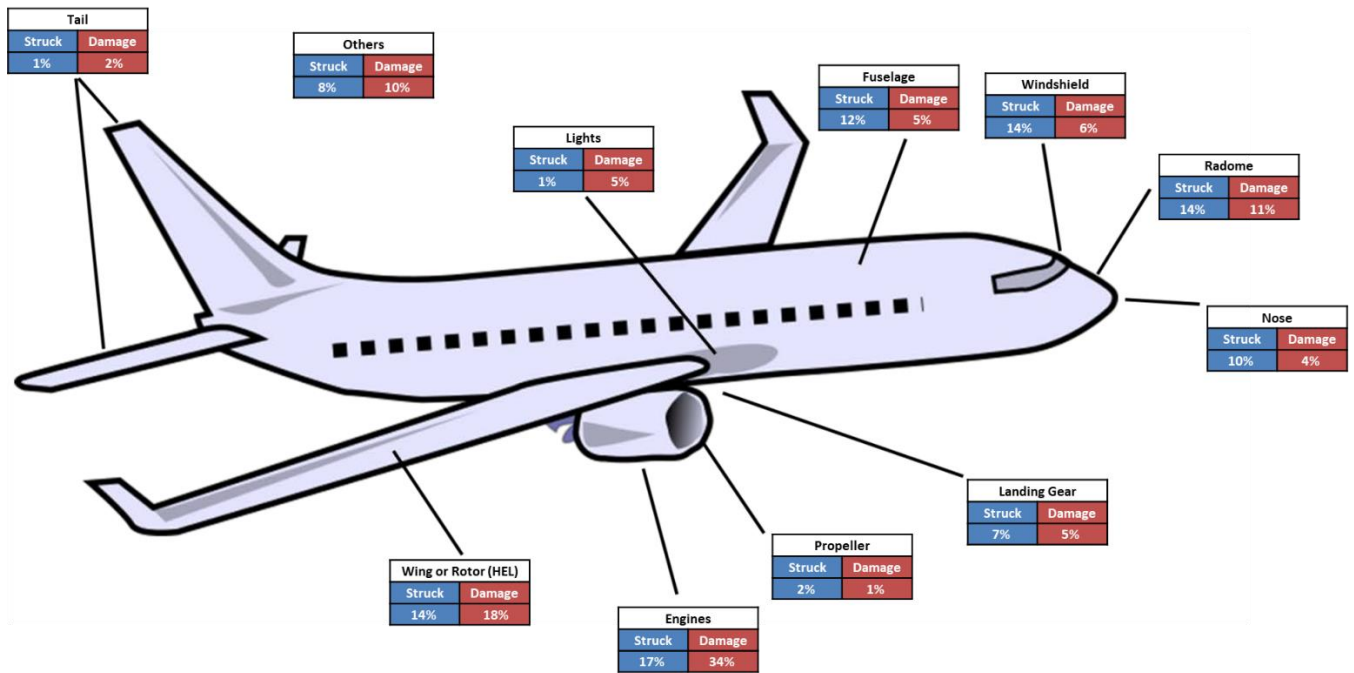


Figure 1. Illustration of parts of aircraft struck and damage

2.13 **Brief summary of wildlife strikes:** Table 1 below provides a brief summary of wildlife strike characteristics for the data period covering the years 2001 to 2021.

Data	2001-2007	2008-2015	2016-2021
<i>States reporting</i>	51	91	136
<i>States/territories of occurrence</i>	145	105	194
<i>Strikes reported</i>	42 508	97 751	273 343
<i>Day time strikes</i>	63%	68%	68%
<i>Night time strikes</i>	24%	25%	19%
<i>Peak month activity</i>	12% (August)	14% (August)	12% (July and August)
<i>Strikes during takeoff</i>	39%	31%	24%
<i>Strikes during approach</i>	37%	33%	23%
<i>Strikes during landing</i>	17%	25%	23%
<i>Wildlife specie most frequent</i>	Perching birds	Perching birds	Hawks, eagles and vultures
<i>Part struck most frequent</i>	Engines and Radome	Engines and Radome	Engines and Radome
<i>Part damage most frequent</i>	Engines and Wing/Rotor	Engines and Wing/Rotor	Engines and Wing/Rotor

Table 1. Data comparison

ATTACHMENT C to EB 2023/30

IBIS WORLD WILDLIFE STRIKE STATISTICS FOR THE YEARS 2016-2021

Month of Occurrence	1	2	C	F	G	H	I	J	K	L	M	N	O	P	Q	R	S	T	W	X	Y	Other	Unknown	Total
Jan	367	3	2	2	5	261	316	243	2197	30	26	1506	525	59	22	374	11	39	3	58	1179	415	5051	12694
Feb	444	2	4	3	1	251	367	225	2579	20	43	1452	464	51	24	289	6	37	3	41	1320	366	5230	13222
Mar	492	12	5	4		218	378	323	3807	21	55	1780	489	55	42	345	10	43	6	54	1775	404	7421	17739
Apr	563	28	1 1	9	3	186	308	253	3684	33	79	2012	689	45	43	266	26	232	3	70	2670	334	9064	20611
May	631	60	8	4	2	253	418	221	3704	25	68	2389	114 6	45	70	269	97	815	1 7	94	4576	399	11848	27159
Jun	580	66	3	3	6	177	369	164	3704	29	43	2353	132 3	46	42	333	62	826	1 7	73	4384	408	11111	26122
Jul	914	55	5	4	2	236	448	104	5406	23	38	2998	169 4	63	42	355	79	534	3 0	79	6358	418	12744	32629
Aug	125 0	26	9	4	6	211	447	174	5215	33	78	3341	188 4	57	48	371	15 0	307	4 6	56	5729	390	13561	33393
Sep	962	24	3	7	6	263	461	220	4228	25	93	3119	146 5	10 0	77	354	23 6	285	1 4	12 2	4942	368	12802	30176
Oct	708	17	8	1 2	1 2	205	441	332	3378	44	10 5	2619	105 2	66	80	372	33	144	3	18 3	4931	419	13235	28399
Nov	408	7	1 6	1 0	5	233	420	377	2485	41	70	2125	723	68	29	425	12	36	6	78	2719	437	7641	18371
Dec	323	5	9	4	1 1	177	409	279	1966	17	27	1683	572	75	18	455	10	27	2	59	1377	400	4914	12819
Light Conditions	1	2	C	F	G	H	I	J	K	L	M	N	O	P	Q	R	S	T	W	X	Y	Other	Unknown	Total
Dawn	171	2	2	1	2	493	748	130	2235	24	35	1645	384	23	69	200	17	36	6	39	1012	299	2350	9923
Unknown	339	3			1	11	74	97	476	11	4	490	110	13	2	54	4	160	5	1	928	32	5336	8276
Night	219 2	14	1 1	2 6	1 3	88	275	842	2017	22	12 4	2553	522	42	67	970	10 4	44	3	70	2977	818	19658	33452
Daylight	858	54	5 0	9 2	2 8	195 1	283 1	858 1	2916 5	14 3	30 4	1471 3	489 5	47 6	32 2	146 5	10 6	136 5	8 2	72 1	1755 3	3264	46223	127436
Dusk/twilight	211	4	5		1	58	152	158	1349	12	22	910	298	19	22	186	15	67	8	31	1026	253	3351	8158

C-2

Flight Phase	1	2	C	F	G	H	I	J	K	L	M	N	O	P	Q	R	S	T	W	X	Y	Other	Unknown	Total
Approach	882	1	2 4	1 5	6	198	394	865	8030	21	14 0	2994	110 5	57	78	363	67	661	8	89	5714	750	32216	54678
En Route	62		4	4	4	54	108	109	2470	8	20	563	138	2	10	48	4	40	1	14	975	184	6487	11309
Landing	158 4	27	9	2 5	121	574	380	7665	11 4	92	5044	211 0	24 9	40	851	76	982	6 1	38	8068	804	23736	52642	
Manoeuvring	1						6		24			3			1		2			6			87	130
Post-impact	9		1 6		4	170 2	191 0	112	7595		83	6467	964	40	26 8	885	21	37	7	63 8	1777	1674	3331	27540
Standing	35	2			2	7	22	12	175	1	5	110	49	2	1	13	2	6	1	1	132	40	1216	1834
Take-off	105 5	21	1 3	1 0	8	216	667	522	8716	98	13 1	4480	227 1	27 9	43	570	60	887	4 5	55	7185	943	28120	56395
Taxi	134	9	2		5	307	549	27	1809	14	23	990	131	13	43	93	4	10	2	12	249	271	1855	6552
Tow	1											1											3	5
Unknown	320 1	19 0	1 4	3 2	1 1	58	466	722	4848	67	19 2	5512	428 0	54	46	117 7	40 4	600	2 2	95	1473 6	66	12765	49558
Parts Struck	1	2	C	F	G	H	I	J	K	L	M	N	O	P	Q	R	S	T	W	X	Y	Other	Unknown	Total
Radome	106	0	1	0	3	21	68	48	751	7	9	536	391	6	7	65	10	176	1 5	7	1113	138	6162	9640
Windshield	100	0	1	0	2	22	57	49	663	1	6	487	364	4	3	78	4	196	5	9	1243	142	6170	9606
Nose	102	1	0	0	6	17	36	45	549	7	8	401	256	6	4	58	10	159	1 2	6	1236	61	4110	7090
Engines	55	0	5	0	2	36	122	138	1541	25	24	947	544	6	8	117	10	66	4	9	803	184	6931	11577
Propeller	20	0	0	1	1	1	24	18	247	10	9	160	47	7	0	12	1	5	0	1	110	18	417	1109
Wing/Rotor	127	0	2	2	2	31	118	140	1083	20	21	775	382	16	7	54	16	72	1 5	4	1129	100	5276	9392
Fuselage	57	0	4	0	0	28	77	52	980	8	13	685	277	3	10	87	7	156	3	10	1013	179	4791	8440
Landing gear	311	9	2	1	3	14	72	66	861	26	12	524	228	4	7	97	11	39	1	7	405	96	2130	4926
Tail	2	0	1	0	0	4	5	12	78	0	1	38	28	2	0	3	0	5	0	0	58	6	235	478
Lights	6	0	0	0	0	1	1	11	42	1	0	43	26	1	0	0	0	2	0	0	33	12	229	408
Other	88	2	1	0	0	21	64	38	572	6	8	426	185	6	3	58	4	27	0	5	833	120	3088	5555

C-3

Parts Damage	1	2	C	F	G	H	I	J	K	L	M	N	O	P	Q	R	S	T	W	X	Y	Other	Unknown	Total
Radome	1	0	0	0	0	9	10	24	110	0	2	67	29	0	1	5	0	5	1	1	31	9	583	888
Windshield	3	0	1	1	0	5	7	9	63	1	0	30	12	1	1	2	0	2	0	0	21	7	274	440
Nose	3	0	0	0	0	5	2	16	57	0	0	6	6	1	0	5	0	8	0	0	22	5	180	316
Engines	9	0	3	0	0	16	38	52	434	10	4	267	225	0	2	21	0	2	0	3	78	57	1463	2684
Propeller	6	0	0	0	0	0	10	1	15	3	2	13	7	1	1	1	0	0	0	0	2	1	38	101
Wing/Rotor	24	0	0	1	0	12	28	53	251	5	7	104	40	1	0	10	1	3	0	1	48	18	764	1371
Fuselage	9	0	1	0	0	2	9	10	56	0	3	12	2	1	3	4	0	2	0	0	27	10	187	338
Landing gear	29	0	1	0	0	2	4	3	83	0	1	33	31	0	1	2	0	1	0	0	10	4	153	358
Tail	6	0	1	0	0	1	2	1	21	1	0	7	28	0	0	1	0	0	0	0	12	3	62	146
Lights	2	0	0	0	0	1	1	9	71	2	0	35	22	1	0	0	0	1	0	0	12	11	218	386
Other	7	0	0	0	0	5	7	5	123	5	1	198	77	1	1	6	0	1	0	0	85	7	726	1255

HEIGHT (FT)	1	2	C	F	G	H	I	J	K	L	M	N	O	P	Q	R	S	T	W	X	Y	Other	Unknown	Total
0 up to 1000	795	12			1	27	241	199	2307	38	30	1872	920	15 2	5	132	17	147	1 3	4	3719	137	11445	22213
1001 up to 2500	27		1	2	1	9	7	39	141		2	39	45	2		1		10		2	138	19	1427	1912
Above 2500	84		4 9	4	2 6	243 4	301 0	219	2427 2		27 1	1072 2	151 0	86	42 4	154 7	65	91	8	77 5	2994	4327	15425	68343

Speed IAS (KT)	1	2	C	F	G	H	I	J	K	L	M	N	O	P	Q	R	S	T	W	X	Y	Other	Unknown	Total
0 up to 150	284		4 3	3	2 8	238 0	308 4	319	2375 5	36	25 4	1162 6	220 1	76	40 1	157 1	69	185	1 2	75 7	5256	4187	22818	79345
151 up to 250	32		6	1	1	60	74	45	2120		29	413	152	2	24	62	2	15		20	332	296	3993	7679
Above 250	1		1			8	7		186		4	44	4		1	5		1		3	20	19	179	483

C-4

Pilot Warned	1	2	C	F	G	H	I	J	K	L	M	N	O	P	Q	R	S	T	W	X	Y	Other	Unknown	Total
No	912	34	8	1 4	5	44	302	865	3295	12 4	40	3711	141 8	6	10	440	40	244	7	26	6517	209	25549	43820
Unknown	347 6	24 0	1 7	3 9	9	84	653	992	5357	95	24 9	6700	565 8	11	75	120 8	53 8	877	1 3	11 3	1956 2	48	22746	68760
Yes	676	19	1 5	1 0	8	217	510	554	5218	18	10 1	3498	148 3	11	48	466	82	498	1 7	18 4	6774	722	8552	29681
Wildlife Seen	1	2	C	F	G	H	I	J	K	L	M	N	O	P	Q	R	S	T	W	X	Y	Other	Unknown	Total
1	177 0	27	2 0	1 2	1 7	525	126 0	478	9971	79	15 5	5497	171 0	34 7	94	946	95	563	3 8	25 2	8186	1522	22297	55861
2 up to 10	229	2	1 9	4	1 6	104 0	150 5	666	1318 5	63	16 2	7236	167 4	16 9	22 7	789	30	300	1 3	38 8	4488	1629	10509	44343
11 up to 100	20	2	1 1	2	3	846	753	165	5559	6	53	2513	578	20	11 1	266	13	56	1	13 0	1403	702	2789	16002
More	6				1	61	71	27	271		3	253	94	14	1	9	1	7	2	1	277	38	494	1631
Unknown	328 9	19 8	1 6	4 1	8	71	556	943	4645	98	21 4	6125	499 9	10	69	113 3	47 0	121 2	1 2	12 3	1855 3	78	46373	89236
Wildlife Struck	1	2	C	F	G	H	I	J	K	L	M	N	O	P	Q	R	S	T	W	X	Y	Other	Unknown	Total
1	584 2	28 7	3 5	5 2	2 5	179	124 1	185 9	1441 0	22 3	37 8	1211 3	816 6	99	10 5	232 5	63 5	259 5	8 7	18 2	3114 7	199	61138	143322
11 up to 100	4					2	2	11	8	2	1	124	201	8				6			201	3	234	807
2 up to 10	252	5		1 1	2	22	136	613	602	66	32	2099	139 7	41	5	70	27	316	2 6	6	4431	62	5939	16160
More	3								1			3	1			2	1	1			15	8	20	55
Unknown	77	2			2		84	27	500	11	3	537	156			16		36			821	91	23614	25977

ATTACHMENT D to EB 2023/30

LIST OF WILDLIFE SPECIES FOR THE YEARS 2016-2021

2016-2021 CODE	SCIENTIFIC NAME	ENGLISH NAME	NUMBER OF CASES
1	MAMMALIA	MAMMALS	7642
2	REPTILIA	REPTILE	305
C	APTERYGIFORMES	KIWI	83
F	PODICIPEDIFORMES	GREBE	66
G	PROCELLARIIFORMES	ALBATROSS, SHEARWATERS, PETREL	59
H	PELECANIFORMES	PELICANS, CORMORANTS, BOOBIES	2671
I	CICONIIFORMES	HERON, STORK, IBIS, FLAMINGO	4782
J	ANSERIFORMES	DUCKS, GEESE, SWANS	2915
K	FALCONIFORMES	HAWKS, EAGLES, VULTURES	42353
L	GALLIFORMES	CHICKEN-LIKE BIRDS	341
M	GRUIFORMES	CRANES, RAILS	725
N	CHARADRIIFORMES	SHORE BIRDS	27377
O	COLUMBIFORMES	PIGEONS, GROUSE	12026
P	PSITTACIFORMES	PARROT, MACAW, PARAKEET, LORIE	730

2016-2021 CODE	SCIENTIFIC NAME	ENGLISH NAME	NUMBER OF CASES
Q	CUCULIFORMES	CUCKOOS	537
R	STRIGIFORMES	OWLS	4208
S	CAPRIMULGIFORMES	GOATSUCKER, NIGHTJAR, FROGMOUTH	732
T	APODIFORMES	SWIFT, TREE-SWIFT, HUMMINGBIRD	3325
W	CORACIIFORMES	KINGFISHERS, MOTMOTS, HORNBILL	150
X	PICIFORMES	WOODPECKERS, TOUCANS, BARBETS	967
Y	PASSERIFORMES	PERCHING BIRDS	41960

— END —