

ICAO MID Office Seminar API/PNR – 26 June 2024

Mr. Dennis Hand
International Consultant – Law Enforcement Expert
UNODC AIRCOP
Countering Terrorist Travel Programme

dennis.hand@un.org

What is a Passenger Information Unit? (PIU)

Basic elements of a PIU

What does a PIU do?

How does a PIU work?

Passenger Information Unit (PIU):

The authority responsible for collecting, storing and processing API and PNR data;

where appropriate, transferring API and PNR data or the result of processing that data to the competent authorities;

where appropriate, exchanging API and PNR data and the result of processing that data with other countries and INTERPOL;

carrying out its activities in a manner consistent with the protection of personal data.

What does a PIU do?

Based on the collection, analysis and sharing of passenger data, promote an intelligence-led approach to:

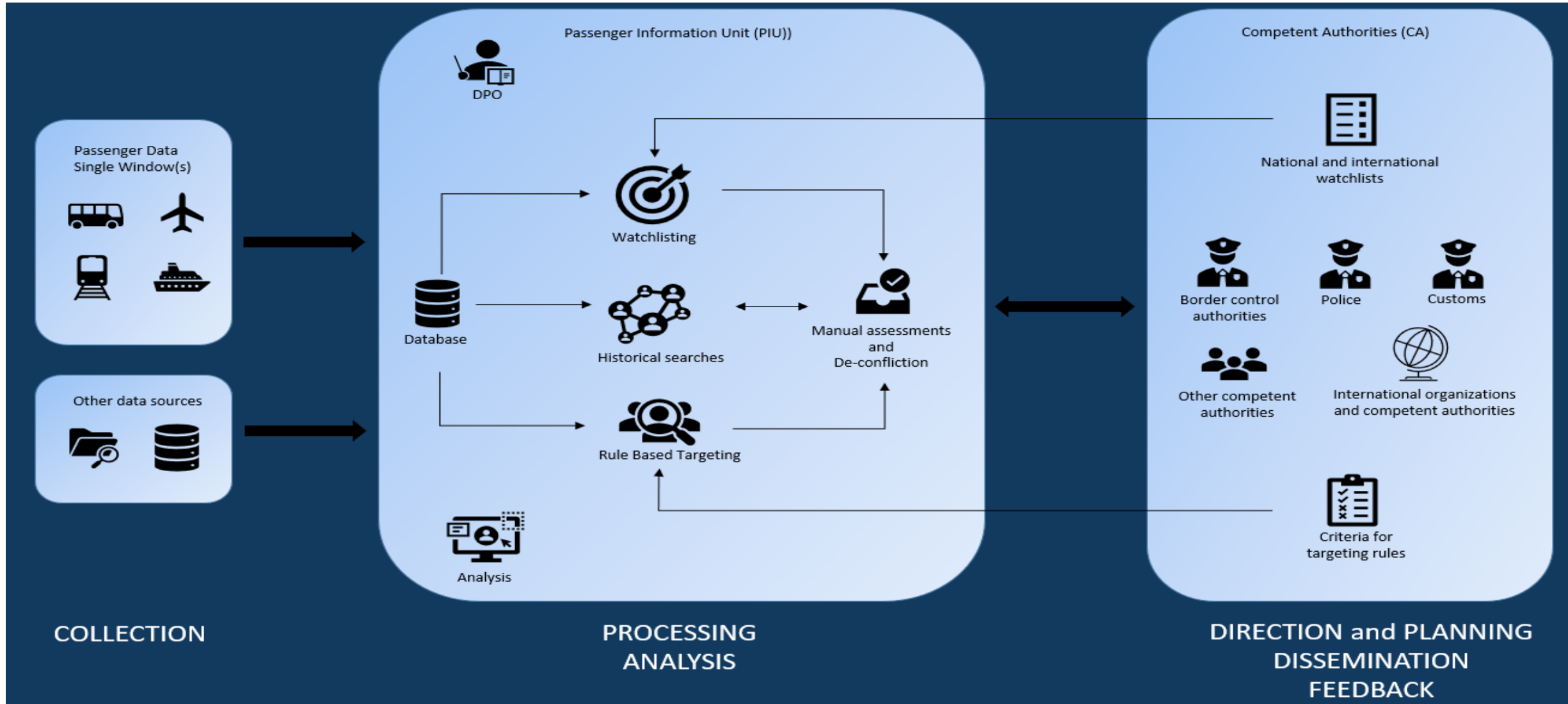
Conduct risk assessments.

Implement appropriate targeting measures.

Identify, detect and intercept high-risk passengers (Terrorism & Serious Crime).

Together with other Competent Authorities.

Intelligence led approach



DIRECTION AND PLANNING

Decision-making

Based on the analysis of data

Through targeted activities

To prevent, detect, investigate and prosecute terrorist offences and serious crime

Intelligence products

Answering to the identified intelligence needs

To be used for action

Focus on the potential high-risk passengers

Smooth travels of legitimate travelers



COLLECTION

Pushes of API/PNR data from air carriers

Passenger Data Single Window

Departure control systems - Booking/reservation systems -Crew systems

Protocols and formats: ebMS, IBM MQ,
PNRGOV, PAXLST

Control the accuracy and data quality

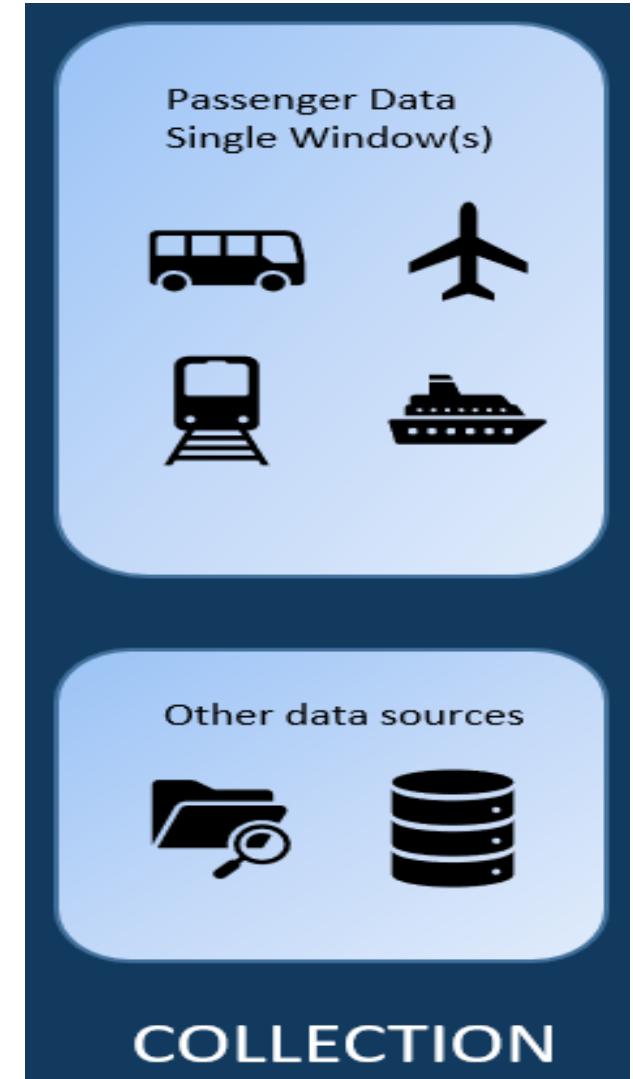
Verify that the data is pushed by the carriers

With the carriers, improve the data quality

Storage of the data

After the retention period the data must be deleted →Data protection

Evidence in court?



PROCESSING AND ANALYSIS

Watchlisting (WL)

API : To find the knowns

Rule Based Targeting (RBT)

PNR (and API): To find the unknowns

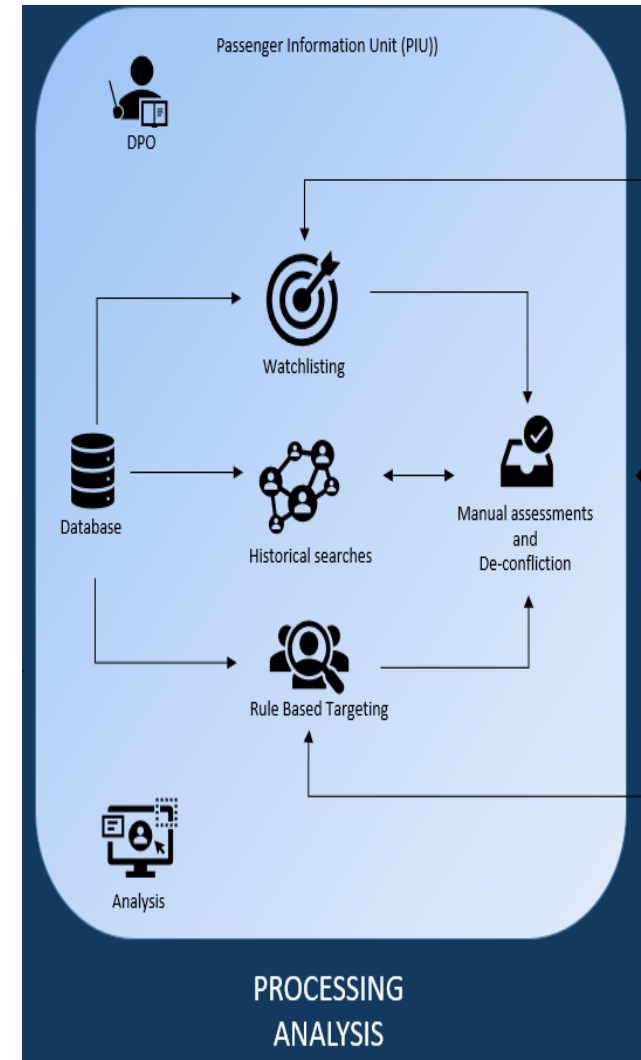
Historical Searches (HS)

API and PNR

Answer the Requests for Information (RFI)

Strategic/Tactical/Operational Analysis

Automated, but manual assessment is needed



DISSEMINATION AND FEEDBACK

Share of verified hits to the competent authorities (CA)

Interpol connection

Classification, handling and reliability markings

Real time to allow actions!

De-confliction

Communication channels other PIUs (countries)

IWG

SIENA, INTERPOL I-24/7, CENcomm

Liaison Officers etc.

Feedback!



OTHER SERVICES PROVIDED BY A PIU

Statistics

Passenger numbers

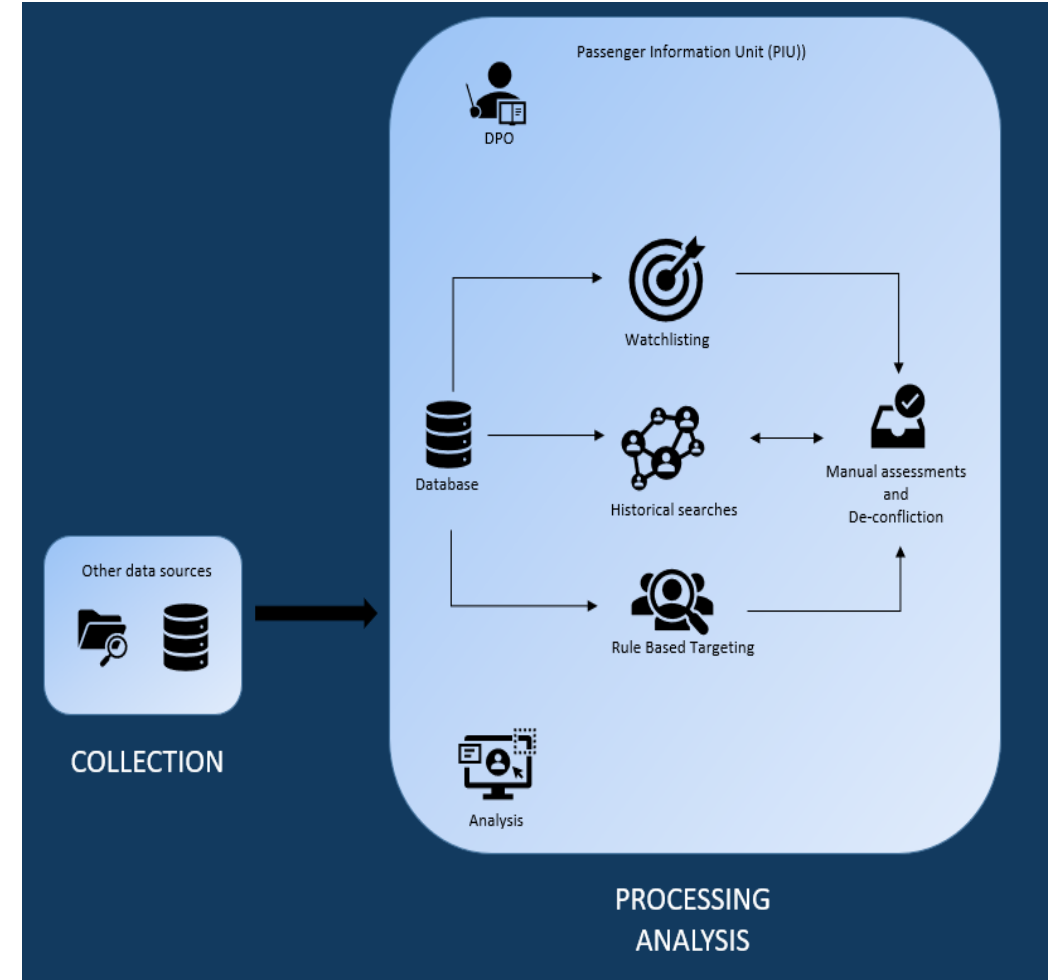
Intercepted passengers, seizures...

Threat analysis for new routes

Reports of trends and patterns

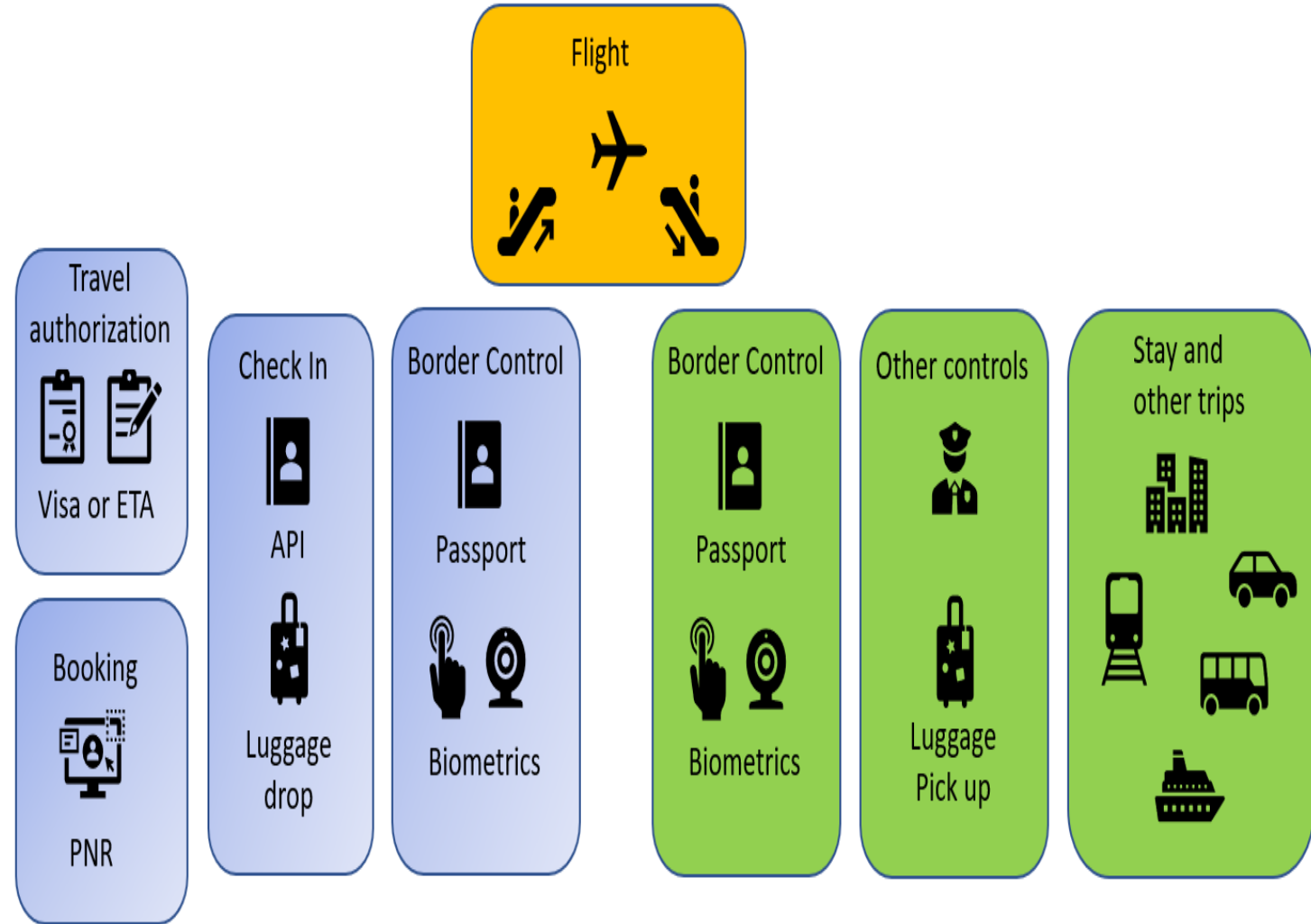
International cooperation

Contributions to national strategies



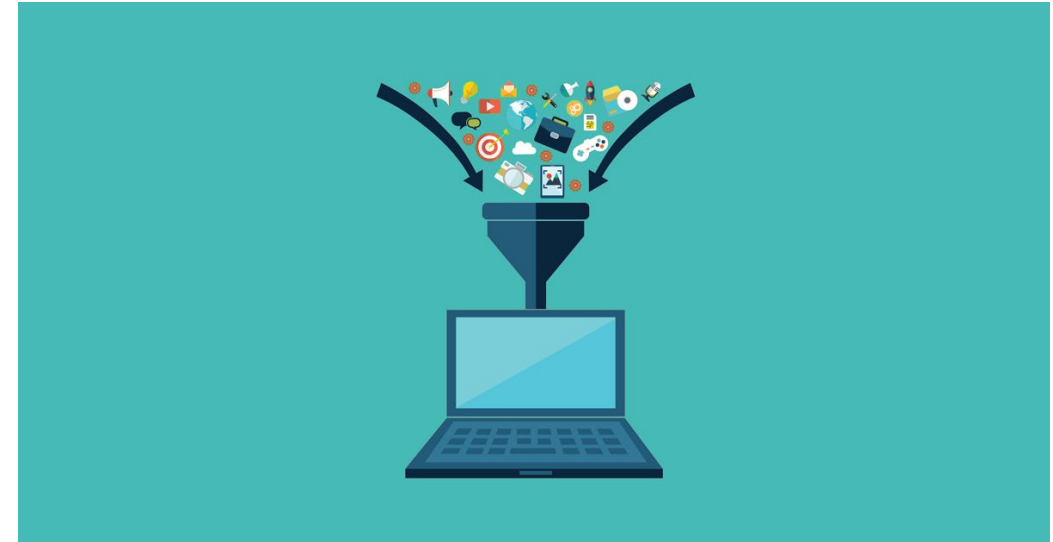
How to have a better picture:

- Visa application
- Booking (PNR)
- Departure (API)
- Arrival (biometrics)
- Stay (PNR, etc.) hotel info?
- Open sources intelligence



Do not collect, process or store these data elements:

Race or ethnic origin,
Political beliefs,
Religion,
Union membership,
Health condition,
Sex life,
Sexual orientation.



THANK YOU | QUESTIONS?



Mr. Dennis Hand UNODC AIRCOP
dennis.hand@un.org

[Website](#) | [Twitter](#)

For more information, please visit the [CT Travel Programme](#)
Website: www.un.org/cttravel | Contact by E-mail: cttravel@un.org